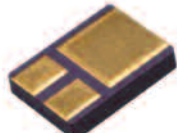




Hi Rel Linear Guide

Linear voltage regulators for high reliability applications

AEROSPACE

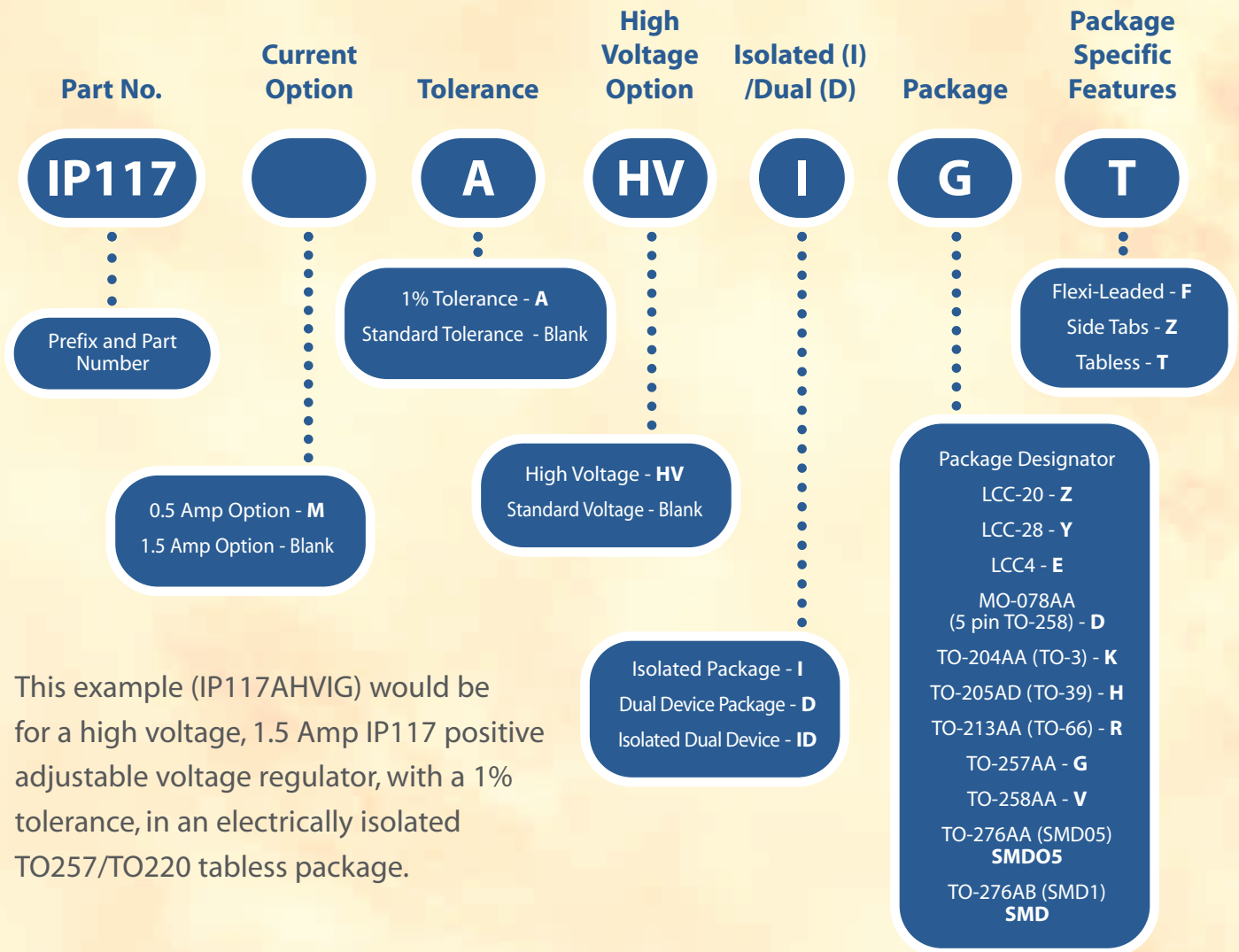




Linear Regulator Contents

Positive Fixed Voltage	2-4
Negative Fixed Voltage	5-7
Positive Adjustable Voltage Linear Regulator	8-9
Negative Adjustable Voltage Linear Regulator	9
Adjustable Low Dropout Fixed Voltage	10
Dual Fixed Voltage	11
Package Options	12

Semelab linear product nomenclature



Fixed voltage linear regulators

Semelab Part No.	Voltage Tol (%)	Vout	Iout	Vin	Line Reg % max	Load Reg % min	DSCC Drawing	Package
IP78M05AH	1	5	0.5	7.0 to 25	0.2	0.5	5962-8778201XX	TO-205AD
IP78M05H	2	5	0.5	7.0 to 25	1.0	1.0	N/A	TO-205AD
IP78M05AE	1	5	0.5	7.0 to 25	0.2	0.5	N/A	LCC4
IP78M05E	2	5	0.5	7.0 to 25	1.0	1.0	N/A	LCC4
IP140MAH-05	1	5	0.5	7.0 to 25	0.2	0.5	5962-8778201XX	TO-205AD
IP140MH-05	2	5	0.5	7.0 to 25	1.0	1.0	N/A	TO-205AD
IP140MAE-05	1	5	0.5	7.0 to 25	0.2	0.5	N/A	LCC4
IP140ME-05	2	5	0.5	7.0 to 25	1.0	1.0	N/A	LCC4
IP78M05AY	1	5	0.5	7.0 to 25	0.2	0.5	N/A	LCC-28
IP78M05Y	2	5	0.5	7.0 to 25	1.0	1.0	N/A	LCC-28
IP78M05AZ	1	5	0.5	7.0 to 25	0.2	0.5	5962-87782012X	LCC-20
IP78M05Z	2	5	0.5	7.0 to 25	1.0	1.0	N/A	LCC-20
IP140MAY-05	1	5	0.5	7.0 to 25	0.2	0.5	N/A	LCC-28
IP140MY-05	2	5	0.5	7.0 to 25	1.0	1.0	N/A	LCC-28
IP140MAZ-05	1	5	0.5	7.0 to 25	0.2	0.5	5962-87782012X	LCC-20
IP140MZ-05	2	5	0.5	7.0 to 25	1.0	1.0	N/A	LCC-20
IP7805ASMD	1	5	1.0	7.0 to 25	0.2	0.5	5962-8778201NX	TO-276AB
IP7805SMD	2	5	1.0	7.0 to 25	1.0	1.0	N/A	TO-276AB
IP7805AG	1	5	1.0	7.0 to 25	0.2	0.5	5962-8778201TX	TO-257AA
IP7805G	2	5	1.0	7.0 to 25	1.0	1.0	N/A	TO-257AA
IP7805AK	1	5	1.0	7.0 to 25	0.2	0.5	5962-8778201YX	TO-204AA
IP7805K	2	5	1.0	7.0 to 25	1.0	1.0	N/A	TO-204AA
IP7805AIG	1	5	1.0	7.0 to 25	0.2	0.5	5962-8778201UX	TO-257AA
IP7805IG	2	5	1.0	7.0 to 25	1.0	1.0	N/A	TO-257AA
IP7805ASMD05	1	5	1.0	7.0 to 25	0.2	0.5	5962-87782016X	TO-276AA
IP7805SMD05	2	5	1.0	7.0 to 25	1.0	1.0	N/A	TO-276AA
IP7805AR	1	5	1.0	7.0 to 25	0.2	0.5	5962-8778201ZX	TO-213AA
IP7805R	2	5	1.0	7.0 to 25	1.0	1.0	N/A	TO-213AA
IP140ASMD-05	1	5	1.0	7.0 to 25	0.2	0.5	5962-8778201NX	TO-276AB
IP140SMD-05	2	5	1.0	7.0 to 25	1.0	1.0	N/A	TO-276AB
IP140AG-05	1	5	1.0	7.0 to 25	0.2	0.5	5962-8778201TX	TO-257AA
IP140G-05	2	5	1.0	7.0 to 25	1.0	1.0	N/A	TO-257AA
IP140AK-05	1	5	1.0	7.0 to 25	0.2	0.5	5962-8778201YX	TO-204AA
IP140K-05	2	5	1.0	7.0 to 25	1.0	1.0	N/A	TO-204AA
IP140AIG-05	1	5	1.0	7.0 to 25	0.2	0.5	5962-8778201UX	TO-257AA
IP140IG-05	2	5	1.0	7.0 to 25	1.0	1.0	N/A	TO-257AA
IP140ASMD05-05	1	5	1.0	7.0 to 25	0.2	0.5	5962-87782016X	TO-276AA
IP140SMD05-05	2	5	1.0	7.0 to 25	1.0	1.0	N/A	TO-276AA
IP140AR-05	1	5	1.0	7.0 to 25	0.2	0.5	5962-8778201ZX	TO-213AA
IP140R-05	2	5	1.0	7.0 to 25	1.0	1.0	N/A	TO-213AA
IP123AK-05	1	5	3.0	8 to 15	0.3	1.0	N/A	TO-204AA
IP123K-05	2	5	3.0	8 to 15	0.5	2.0	N/A	TO-204AA
IP123AV-05	1	5	3.0	8 to 15	0.3	1.0	N/A	TO-258AA
IP123V-05	2	5	3.0	8 to 15	0.5	2.0	N/A	TO-258AA
IP123AG-05	1	5	3.0	8 to 15	0.3	1.0	N/A	TO-257AA
IP123G-05	2	5	3.0	8 to 15	0.5	2.0	N/A	TO-257AA

Fixed voltage linear regulators

Semelab Part No.	Voltage Tol (%)	Vout	Iout	Vin	Line Reg % max	Load Reg % min	DSCC Drawing	Package
IP78M12AH	1	12	0.5	14.5 to 30	0.2	0.5	5962-8777601XX	TO-205AD
IP78M12H	2	12	0.5	14.5 to 30	1.0	1.0	N/A	TO-205AD
IP78M12AE	1	12	0.5	14.5 to 30	0.2	0.5	N/A	LCC4
IP78M12E	2	12	0.5	14.5 to 30	1.0	1.0	N/A	LCC4
IP140MAH-12	1	12	0.5	14.5 to 30	0.2	0.5	5962-8777601XX	TO-205AD
IP140MH-12	2	12	0.5	14.5 to 30	1.0	1.0	N/A	TO-205AD
IP140MAE-12	1	12	0.5	14.5 to 30	0.2	0.5	N/A	LCC4
IP140ME-12	2	12	0.5	14.5 to 30	1.0	1.0	N/A	LCC4
IP78M12AY	1	12	0.5	14.5 to 30	0.2	0.5	N/A	LCC-28
IP78M12Y	2	12	0.5	14.5 to 30	1.0	1.0	N/A	LCC-28
IP78M12AZ	1	12	0.5	14.5 to 30	0.2	0.5	5962-87776012X	LCC-20
IP78M12Z	2	12	0.5	14.5 to 30	1.0	1.0	N/A	LCC-20
IP140MAY-12	1	12	0.5	14.5 to 30	0.2	0.5	N/A	LCC-28
IP140MY-12	2	12	0.5	14.5 to 30	1.0	1.0	N/A	LCC-28
IP140MAZ-12	1	12	0.5	14.5 to 30	0.2	0.5	5962-87776012X	LCC-20
IP140MZ-12	2	12	0.5	14.5 to 30	1.0	1.0	N/A	LCC-20
IP7812ASMD	1	12	1.0	14.5 to 30	0.2	0.5	5962-8777601NX	TO-276AB
IP7812SMD	2	12	1.0	14.5 to 30	1.0	1.0	N/A	TO-276AB
IP7812AG	1	12	1.0	14.5 to 30	0.2	0.5	5962-8777601TX	TO-257AA
IP7812G	2	12	1.0	14.5 to 30	1.0	1.0	N/A	TO-257AA
IP7812AK	1	12	1.0	14.5 to 30	0.2	0.5	5962-8777601YX	TO-204AA
IP7812K	2	12	1.0	14.5 to 30	1.0	1.0	N/A	TO-204AA
IP7812AIG	1	12	1.0	14.5 to 30	0.2	0.5	5962-8777601UX	TO-257AA
IP7812IG	2	12	1.0	14.5 to 30	1.0	1.0	N/A	TO-257AA
IP7812ASMD05	1	12	1.0	14.5 to 30	0.2	0.5	5962-87776015X	TO-276AA
IP7812SMD05	2	12	1.0	14.5 to 30	1.0	1.0	N/A	TO-276AA
IP7812AR	1	12	1.0	14.5 to 30	0.2	0.5	5962-8777601ZX	TO-213AA
IP7812R	2	12	1.0	14.5 to 30	1.0	1.0	N/A	TO-213AA
IP140ASMD-12	1	12	1.0	14.5 to 30	0.2	0.5	5962-8777601NX	TO-276AB
IP140SMD-12	2	12	1.0	14.5 to 30	1.0	1.0	N/A	TO-276AB
IP140AG-12	1	12	1.0	14.5 to 30	0.2	0.5	5962-8777601TX	TO-257AA
IP140G-12	2	12	1.0	14.5 to 30	1.0	1.0	N/A	TO-257AA
IP140AK-12	1	12	1.0	14.5 to 30	0.2	0.5	5962-8777601YX	TO-204AA
IP140K-12	2	12	1.0	14.5 to 30	1.0	1.0	N/A	TO-204AA
IP140AIG-12	1	12	1.0	14.5 to 30	0.2	0.5	5962-8777601UX	TO-257AA
IP140IG-12	2	12	1.0	14.5 to 30	1.0	1.0	N/A	TO-257AA
IP140ASMD05-12	1	12	1.0	14.5 to 30	0.2	0.5	5962-87776015X	TO-276AA
IP140SMD05-12	2	12	1.0	14.5 to 30	1.0	1.0	N/A	TO-276AA
IP140AR-12	1	12	1.0	14.5 to 30	0.2	0.5	5962-8777601ZX	TO-213AA
IP140R-12	2	12	1.0	14.5 to 30	1.0	1.0	N/A	TO-213AA
IP123AK-12	1	12	3.0	15.4 to 22	0.3	1.0	N/A	TO-204AA
IP123K-12	2	12	3.0	15.4 to 22	0.5	2.0	N/A	TO-204AA
IP123AV-12	1	12	3.0	15.4 to 22	0.3	1.0	N/A	TO-258AA
IP123V-12	2	12	3.0	15.4 to 22	0.5	2.0	N/A	TO-258AA
IP123AG-12	1	12	3.0	15.4 to 22	0.3	1.0	N/A	TO-257AA
IP123G-12	2	12	3.0	15.4 to 22	0.5	2.0	N/A	TO-257AA

Fixed voltage linear regulators

Semelab Part No.	Voltage Tol (%)	Vout	Iout	Vin	Line Reg % max	Load Reg % min	DSCC Drawing	Package
IP78M15AH	1	15	0.5	17.5 to 30	0.2	0.5	5962-8855301XX	TO-205AD
IP78M15H	2	15	0.5	17.5 to 30	1.0	1.0	N/A	TO-205AD
IP78M15AE	1	15	0.5	17.5 to 30	0.2	0.5	N/A	LCC4
IP78M15E	2	15	0.5	17.5 to 30	1.0	1.0	N/A	LCC4
IP140MAH-15	1	15	0.5	17.5 to 30	0.2	0.5	5962-8855301XX	TO-205AD
IP140MH-15	2	15	0.5	17.5 to 30	1.0	1.0	N/A	TO-205AD
IP140MAE-15	1	15	0.5	17.5 to 30	0.2	0.5	N/A	LCC4
IP140ME-15	2	15	0.5	17.5 to 30	1.0	1.0	N/A	LCC4
IP78M15AY	1	15	0.5	17.5 to 30	0.2	0.5	N/A	LCC-28
IP78M15Y	2	15	0.5	17.5 to 30	1.0	1.0	N/A	LCC-28
IP78M15AZ	1	15	0.5	17.5 to 30	0.2	0.5	5962-88553012X	LCC-20
IP78M15Z	2	15	0.5	17.5 to 30	1.0	1.0	N/A	LCC-20
IP140MAY-15	1	15	0.5	17.5 to 30	0.2	0.5	N/A	LCC-28
IP140MY-15	2	15	0.5	17.5 to 30	1.0	1.0	N/A	LCC-28
IP140MAZ-15	1	15	0.5	17.5 to 30	0.2	0.5	5962-88553012X	LCC-20
IP140MZ-15	2	15	0.5	17.5 to 30	1.0	1.0	N/A	LCC-20
IP7815ASMD	1	15	1.0	17.5 to 30	0.2	0.5	5962-8855301NX	TO-276AB
IP7815SMD	2	15	1.0	17.5 to 30	1.0	1.0	N/A	TO-276AB
IP7815AG	1	15	1.0	17.5 to 30	0.2	0.5	5962-8855301TX	TO-257AA
IP7815G	2	15	1.0	17.5 to 30	1.0	1.0	N/A	TO-257AA
IP7815AK	1	15	1.0	17.5 to 30	0.2	0.5	5962-8855301YX	TO-204AA
IP7815K	2	15	1.0	17.5 to 30	1.0	1.0	N/A	TO-204AA
IP7815AIG	1	15	1.0	17.5 to 30	0.2	0.5	5962-8855301UX	TO-257AA
IP7815IG	2	15	1.0	17.5 to 30	1.0	1.0	N/A	TO-257AA
IP7815ASMD05	1	15	1.0	17.5 to 30	0.2	0.5	5962-88553015X	TO-276AA
IP7815SMD05	2	15	1.0	17.5 to 30	1.0	1.0	N/A	TO-276AA
IP7815AR	1	15	1.0	17.5 to 30	0.2	0.5	5962-8855301ZX	TO-213AA
IP7815R	2	15	1.0	17.5 to 30	1.0	1.0	N/A	TO-213AA
IP140ASMD-15	1	15	1.0	17.5 to 30	0.2	0.5	5962-8855301NX	TO-276AB
IP140SMD-15	2	15	1.0	17.5 to 30	1.0	1.0	N/A	TO-276AB
IP140AG-15	1	15	1.0	17.5 to 30	0.2	0.5	5962-8855301TX	TO-257AA
IP140G-15	2	15	1.0	17.5 to 30	1.0	1.0	N/A	TO-257AA
IP140AK-15	1	15	1.0	17.5 to 30	0.2	0.5	5962-8855301YX	TO-204AA
IP140K-15	2	15	1.0	17.5 to 30	1.0	1.0	N/A	TO-204AA
IP140AIG-15	1	15	1.0	17.5 to 30	0.2	0.5	5962-8855301UX	TO-257AA
IP140IG-15	2	15	1.0	17.5 to 30	1.0	1.0	N/A	TO-257AA
IP140ASMD05-15	1	15	1.0	17.5 to 30	0.2	0.5	5962-88553015X	TO-276AA
IP140SMD05-15	2	15	1.0	17.5 to 30	1.0	1.0	N/A	TO-276AA
IP140AR-15	1	15	1.0	17.5 to 30	0.2	0.5	5962-8855301ZX	TO-213AA
IP140R-15	2	15	1.0	17.5 to 30	1.0	1.0	N/A	TO-213AA
IP123AK-15	1	15	3.0	18.5 to 25	0.3	1.0	N/A	TO-204AA
IP123K-15	2	15	3.0	18.5 to 25	0.5	2.0	N/A	TO-204AA
IP123AV-15	1	15	3.0	18.5 to 25	0.3	1.0	N/A	TO-258AA
IP123V-15	2	15	3.0	18.5 to 25	0.5	2.0	N/A	TO-258AA
IP123AG-15	1	15	3.0	18.5 to 25	0.3	1.0	N/A	TO-257AA
IP123G-15	2	15	3.0	18.5 to 25	0.5	2.0	N/A	TO-257AA

Fixed voltage linear regulators

Semelab Part No.	Voltage Tol (%)	Vout	Iout	Vin	Line Reg % max	Load Reg % min	DSCC Drawing	Package
IP79M05AH	1	-5	0.5	-7.0 to -25	0.2	0.5	N/A	TO-205AD
IP79M05H	2	-5	0.5	-7.0 to -25	0.5	1.5	N/A	TO-205AD
IP79M05AE	1	-5	0.5	-7.0 to -25	0.2	0.5	N/A	LCC4
IP79M05E	2	-5	0.5	-7.0 to -25	0.5	1.5	N/A	LCC4
IP120MAH-05	1	-5	0.5	-7.0 to -25	0.2	0.5	N/A	TO-205AD
IP120MH-05	2	-5	0.5	-7.0 to -25	0.5	1.5	N/A	TO-205AD
IP120MAE-05	1	-5	0.5	-7.0 to -25	0.2	0.5	N/A	LCC4
IP120ME-05	2	-5	0.5	-7.0 to -25	0.5	1.5	N/A	LCC4
IP79M05AY	1	-5	0.5	-7.0 to -25	0.2	0.5	N/A	LCC-28
IP79M05Y	2	-5	0.5	-7.0 to -25	0.5	1.5	N/A	LCC-28
IP79M05AZ	1	-5	0.5	-7.0 to -25	0.2	0.5	N/A	LCC-20
IP79M05Z	2	-5	0.5	-7.0 to -25	0.5	1.5	N/A	LCC-20
IP120MAY-05	1	-5	0.5	-7.0 to -25	0.2	0.5	N/A	LCC-28
IP120MY-05	2	-5	0.5	-7.0 to -25	0.5	1.5	N/A	LCC-28
IP120MAZ-05	1	-5	0.5	-7.0 to -25	0.2	0.5	N/A	LCC-20
IP120MZ-05	2	-5	0.5	-7.0 to -25	0.5	1.5	N/A	LCC-20
IP7905ASMD	1	-5	1.5	-7.0 to -25	0.2	0.5	N/A	TO-276AB
IP7905SMD	2	-5	1.5	-7.0 to -25	0.5	1.5	N/A	TO-276AB
IP7905AG	1	-5	1.5	-7.0 to -25	0.2	0.5	N/A	TO-257AA
IP7905G	2	-5	1.5	-7.0 to -25	0.5	1.5	N/A	TO-257AA
IP7905AK	1	-5	1.5	-7.0 to -25	0.2	0.5	N/A	TO-204AA
IP7905K	2	-5	1.5	-7.0 to -25	0.5	1.5	N/A	TO-204AA
IP7905AIG	1	-5	1.5	-7.0 to -25	0.2	0.5	N/A	TO-257AA
IP7905IG	2	-5	1.5	-7.0 to -25	0.5	1.5	N/A	TO-257AA
IP7905ASMD05	1	-5	1.5	-7.0 to -25	0.2	0.5	N/A	TO-276AA
IP7905SMD05	2	-5	1.5	-7.0 to -25	0.5	1.5	N/A	TO-276AA
IP7905AR	1	-5	1.5	-7.0 to -25	0.2	0.5	N/A	TO-213AA
IP7905R	2	-5	1.5	-7.0 to -25	0.5	1.5	N/A	TO-213AA
IP120ASMD-05	1	-5	1.5	-7.0 to -25	0.2	0.5	N/A	TO-276AB
IP120SMD-05	2	-5	1.5	-7.0 to -25	0.5	1.5	N/A	TO-276AB
IP120AG-05	1	-5	1.5	-7.0 to -25	0.2	0.5	N/A	TO-257AA
IP120G-05	2	-5	1.5	-7.0 to -25	0.5	1.5	N/A	TO-257AA
IP120AK-05	1	-5	1.5	-7.0 to -25	0.2	0.5	N/A	TO-204AA
IP120K-05	2	-5	1.5	-7.0 to -25	0.5	1.5	N/A	TO-204AA
IP120AIG-05	1	-5	1.5	-7.0 to -25	0.2	0.5	N/A	TO-257AA
IP120IG-05	2	-5	1.5	-7.0 to -25	0.5	1.5	N/A	TO-257AA
IP120ASMD05-05	1	-5	1.5	-7.0 to -25	0.2	0.5	N/A	TO-276AA
IP120SMD05-05	2	-5	1.5	-7.0 to -25	0.5	1.5	N/A	TO-276AA
IP120AR-05	1	-5	1.5	-7.0 to -25	0.2	0.5	N/A	TO-213AA
IP120R-05	2	-5	1.5	-7.0 to -25	0.5	1.5	N/A	TO-213AA
IP1R18AK-05	1	-5	5.0	-8.0 to -20	0.3	0.5	N/A	TO-204AA
IP1R18K-05	2	-5	5.0	-8.0 to -20	0.6	1.0	N/A	TO-204AA
IP1R18AG-05	1	-5	5.0	-8.0 to -20	0.3	0.5	N/A	TO-257AA
IP1R18G-05	2	-5	5.0	-8.0 to -20	0.6	1.0	N/A	TO-257AA

Fixed voltage linear regulators

Semelab Part No.	Voltage Tol (%)	Vout	Iout	Vin	Line Reg % max	Load Reg % min	DSCC Drawing	Package
IP79M12AH	1	-12	0.5	-14.5 to -30	0.2	0.5	5962-8874701XX	TO-205AD
IP79M12H	2	-12	0.5	-14.5 to -30	0.5	1.5	7704001XX	TO-205AD
IP79M12AE	1	-12	0.5	-14.5 to -30	0.2	0.5	N/A	LCC4
IP79M12E	2	-12	0.5	-14.5 to -30	0.5	1.5	N/A	LCC4
IP120MAH-12	1	-12	0.5	-14.5 to -30	0.2	0.5	5962-8874701XX	TO-205AD
IP120MH-12	2	-12	0.5	-14.5 to -30	0.5	1.5	7704001XX	TO-205AD
IP120MAE-12	1	-12	0.5	-14.5 to -30	0.2	0.5	N/A	LCC4
IP120ME-12	2	-12	0.5	-14.5 to -30	0.5	1.5	N/A	LCC4
IP79M12AY	1	-12	0.5	-14.5 to -30	0.2	0.5	N/A	LCC-28
IP79M12Y	2	-12	0.5	-14.5 to -30	0.5	1.5	N/A	LCC-28
IP79M12AZ	1	-12	0.5	-14.5 to -30	0.2	0.5	5962-88747012X	LCC-20
IP79M12Z	2	-12	0.5	-14.5 to -30	0.5	1.5	77040012X	LCC-20
IP120MAY-12	1	-12	0.5	-14.5 to -30	0.2	0.5	N/A	LCC-28
IP120MY-12	2	-12	0.5	-14.5 to -30	0.5	1.5	N/A	LCC-28
IP120MAZ-12	1	-12	0.5	-14.5 to -30	0.2	0.5	5962-88747012X	LCC-20
IP120MZ-12	2	-12	0.5	-14.5 to -30	0.5	1.5	77040012X	LCC-20
IP7912ASMD	1	-12	1.5	-14.5 to -30	0.2	0.5	5962-8874701NX	TO-276AB
IP7912SMD	2	-12	1.5	-14.5 to -30	0.5	1.5	N/A	TO-276AB
IP7912AG	1	-12	1.5	-14.5 to -30	0.2	0.5	5962-8874701TX	TO-257AA
IP7912G	2	-12	1.5	-14.5 to -30	0.5	1.5	N/A	TO-257AA
IP7912AK	1	-12	1.5	-14.5 to -30	0.2	0.5	5962-8874701YX	TO-204AA
IP7912K	2	-12	1.5	-14.5 to -30	0.5	1.5	7704001YX	TO-204AA
IP7912AIG	1	-12	1.5	-14.5 to -30	0.2	0.5	5962-8874701UX	TO-257AA
IP7912IG	2	-12	1.5	-14.5 to -30	0.5	1.5	N/A	TO-257AA
IP7912ASMD05	1	-12	1.5	-14.5 to -30	0.2	0.5	5962-88747015X	TO-276AA
IP7912SMD05	2	-12	1.5	-14.5 to -30	0.5	1.5	N/A	TO-276AA
IP7912AR	1	-12	1.5	-14.5 to -30	0.2	0.5	5962-8874701ZX	TO-213AA
IP7912R	2	-12	1.5	-14.5 to -30	0.5	1.5	N/A	TO-213AA
IP120ASMD-12	1	-12	1.5	-14.5 to -30	0.2	0.5	5962-8874701NX	TO-276AB
IP120SMD-12	2	-12	1.5	-14.5 to -30	0.5	1.5	N/A	TO-276AB
IP120AG-12	1	-12	1.5	-14.5 to -30	0.2	0.5	5962-8874701TX	TO-257AA
IP120G-12	2	-12	1.5	-14.5 to -30	0.5	1.5	N/A	TO-257AA
IP120AK-12	1	-12	1.5	-14.5 to -30	0.2	0.5	5962-8874701YX	TO-204AA
IP120K-12	2	-12	1.5	-14.5 to -30	0.5	1.5	7704001YX	TO-204AA
IP120AIG-12	1	-12	1.5	-14.5 to -30	0.2	0.5	5962-8874701UX	TO-257AA
IP120IG-12	2	-12	1.5	-14.5 to -30	0.5	1.5	N/A	TO-257AA
IP120ASMD05-12	1	-12	1.5	-14.5 to -30	0.2	0.5	5962-88747015X	TO-276AA
IP120SMD05-12	2	-12	1.5	-14.5 to -30	0.5	1.5	N/A	TO-276AA
IP120AR-12	1	-12	1.5	-14.5 to -30	0.2	0.5	5962-8874701ZX	TO-213AA
IP120R-12	2	-12	1.5	-14.5 to -30	0.5	1.5	N/A	TO-213AA
IP1R18AK-12	1	-12	5.0	-15 to -27	0.3	0.5	N/A	TO-204AA
IP1R18K-12	2	-12	5.0	-15 to -27	0.6	1.0	N/A	TO-204AA
IP1R18AG-12	1	-12	5.0	-15 to -27	0.3	0.5	N/A	TO-257AA
IP1R18G-12	2	-12	5.0	-15 to -27	0.6	1.0	N/A	TO-257AA

Fixed voltage linear regulators

Semelab Part No.	Voltage Tol (%)	Vout	Iout	Vin	Line Reg % max	Load Reg % min	DSCC Drawing	Package
IP79M15AH	1	-15	0.5	-17.5 to -30	0.2	0.5	5962-8874801XX	TO-205AD
IP79M15H	2	-15	0.5	-17.5 to -30	0.5	1.5	7704001XX	TO-205AD
IP79M15AE	1	-15	0.5	-17.5 to -30	0.2	0.5	N/A	LCC4
IP79M15E	2	-15	0.5	-17.5 to -30	0.5	1.5	N/A	LCC4
IP120MAH-15	1	-15	0.5	-17.5 to -30	0.2	0.5	5962-8874801XX	TO-205AD
IP120MH-15	2	-15	0.5	-17.5 to -30	0.5	1.5	7704001XX	TO-205AD
IP120MAE-15	1	-15	0.5	-17.5 to -30	0.2	0.5	N/A	LCC4
IP120ME-15	2	-15	0.5	-17.5 to -30	0.5	1.5	N/A	LCC4
IP79M15AY	1	-15	0.5	-17.5 to -30	0.2	0.5	N/A	LCC-28
IP79M15Y	2	-15	0.5	-17.5 to -30	0.5	1.5	N/A	LCC-28
IP79M15AZ	1	-15	0.5	-17.5 to -30	0.2	0.5	5962-88748012X	LCC-20
IP79M15Z	2	-15	0.5	-17.5 to -30	0.5	1.5	77040012X	LCC-20
IP120MAY-15	1	-15	0.5	-17.5 to -30	0.2	0.5	N/A	LCC-28
IP120MY-15	2	-15	0.5	-17.5 to -30	0.5	1.5	N/A	LCC-28
IP120MAZ-15	1	-15	0.5	-17.5 to -30	0.2	0.5	5962-88748012X	LCC-20
IP120MZ-15	2	-15	0.5	-17.5 to -30	0.5	1.5	77040012X	LCC-20
IP7915ASMD	1	-15	1.5	-17.5 to -30	0.2	0.5	5962-8874801NX	TO-276AB
IP7915SMD	2	-15	1.5	-17.5 to -30	0.5	1.5	N/A	TO-276AB
IP7915AG	1	-15	1.5	-17.5 to -30	0.2	0.5	5962-8874801TX	TO-257AA
IP7915G	2	-15	1.5	-17.5 to -30	0.5	1.5	N/A	TO-257AA
IP7915AK	1	-15	1.5	-17.5 to -30	0.2	0.5	5962-8874801YX	TO-204AA
IP7915K	2	-15	1.5	-17.5 to -30	0.5	1.5	7704001YX	TO-204AA
IP7915AIG	1	-15	1.5	-17.5 to -30	0.2	0.5	5962-8874801UX	TO-257AA
IP7915IG	2	-15	1.5	-17.5 to -30	0.5	1.5	N/A	TO-257AA
IP7915ASMD05	1	-15	1.5	-17.5 to -30	0.2	0.5	5962-88748015X	TO-276AA
IP7915SMD05	2	-15	1.5	-17.5 to -30	0.5	1.5	N/A	TO-276AA
IP7915AR	1	-15	1.5	-17.5 to -30	0.2	0.5	5962-8874801ZX	TO-213AA
IP7915R	2	-15	1.5	-17.5 to -30	0.5	1.5	N/A	TO-213AA
IP120ASMD-15	1	-15	1.5	-17.5 to -30	0.2	0.5	5962-8874801NX	TO-276AB
IP120SMD-15	2	-15	1.5	-17.5 to -30	0.5	1.5	N/A	TO-276AB
IP120AG-15	1	-15	1.5	-17.5 to -30	0.2	0.5	5962-8874801TX	TO-257AA
IP120G-15	2	-15	1.5	-17.5 to -30	0.5	1.5	N/A	TO-257AA
IP120AK-15	1	-15	1.5	-17.5 to -30	0.2	0.5	5962-8874801YX	TO-204AA
IP120K-15	2	-15	1.5	-17.5 to -30	0.5	1.5	7704001YX	TO-204AA
IP120AIG-15	1	-15	1.5	-17.5 to -30	0.2	0.5	5962-8874801UX	TO-257AA
IP120IG-15	2	-15	1.5	-17.5 to -30	0.5	1.5	N/A	TO-257AA
IP120ASMD05-15	1	-15	1.5	-17.5 to -30	0.2	0.5	5962-88748015X	TO-276AA
IP120SMD05-15	2	-15	1.5	-17.5 to -30	0.5	1.5	N/A	TO-276AA
IP120AR-15	1	-15	1.5	-17.5 to -30	0.2	0.5	5962-8874801ZX	TO-213AA
IP120R-15	2	-15	1.5	-17.5 to -30	0.5	1.5	N/A	TO-213AA
IP1R18AK-15	1	-15	5.0	-18 to -30	0.3	0.5	N/A	TO-204AA
IP1R18K-15	2	-15	5.0	-18 to -30	0.6	1.0	N/A	TO-204AA
IP1R18AG-15	1	-15	5.0	-18 to -30	0.3	0.5	N/A	TO-257AA
IP1R18G-15	2	-15	5.0	-18 to -30	0.6	1.0	N/A	TO-257AA

ADJ- voltage linear regulators

Semelab Part No.	Voltage Tol (%)	Vout	Iout	Vin	Line Reg % max	Load Reg % min	DSCC Drawing	Package
IP117MAZ	1	1.25 to 60	0.5	40	0.3	1.0	77034052A	LCC-20
IP117MZ	4	1.25 to 60	0.5	40	0.3	1.0	77034012A	LCC-20
IP117MASMD05	1	1.25 to 60	0.5	40	0.3	1.0	N/A	TO-276AA
IP117MSMD05	4	1.25 to 60	0.5	40	0.3	1.0	N/A	TO-276AA
IP117MAY	1	1.25 to 60	0.5	40	0.3	1.0	N/A	LCC-28
IP117MY	4	1.25 to 60	0.5	40	0.3	1.0	N/A	LCC-28
IP117MAE	1	1.25 to 60	0.5	40	0.3	1.0	N/A	LCC4
IP117ME	4	1.25 to 60	0.5	40	0.3	1.0	N/A	LCC4
IP117MAH	1	1.25 to 60	0.5	40	0.3	1.0	7703405XA	TO-205AD
IP117MH	4	1.25 to 60	0.5	40	0.3	1.0	7703401XA	TO-205AD
IP117MAHVZ	1	1.25 to 60	0.5	60	0.3	1.0	77034072A	LCC-20
IP117MHVZ	4	1.25 to 60	0.5	60	0.3	1.0	77034022A	LCC-20
IP117MAHVSMD05	1	1.25 to 60	0.5	60	0.3	1.0	N/A	TO-276AA
IP117MHVSMD05	4	1.25 to 60	0.5	60	0.3	1.0	N/A	TO-276AA
IP117MAHVY	1	1.25 to 60	0.5	60	0.3	1.0	N/A	LCC-28
IP117MHVY	4	1.25 to 60	0.5	60	0.3	1.0	N/A	LCC-28
IP117MAHVE	1	1.25 to 60	0.5	60	0.3	1.0	N/A	LCC4
IP117MHVE	4	1.25 to 60	0.5	60	0.3	1.0	N/A	LCC4
IP117MAHVH	1	1.25 to 60	0.5	60	0.3	1.0	7703407XA	TO-205AD
IP117MHVH	4	1.25 to 60	0.5	60	0.3	1.0	7703402XA	TO-205AD
IP117AIG	1	1.25 to 60	1.5	40	0.3	1.0	7703405UA	TO-257AA
IP117IG	4	1.25 to 60	1.5	40	0.3	1.0	7703401UA	TO-257AA
IP117AG	1	1.25 to 60	1.5	40	0.3	1.0	7703405TA	TO-257AA
IP117G	4	1.25 to 60	1.5	40	0.3	1.0	7703401TA	TO-257AA
IP117ASMD	1	1.25 to 60	1.5	40	0.3	1.0	7703405NA	TO-276AB
IP117SMD	4	1.25 to 60	1.5	40	0.3	1.0	7703401NA	TO-276AB
IP117AR	1	1.25 to 60	1.5	40	0.3	1.0	7703405YA	TO-213AA
IP117R	4	1.25 to 60	1.5	40	0.3	1.0	7703401YA	TO-213AA
IP117HVIG	4	1.25 to 60	1.5	60	0.3	1.0	7703402UA	TO-257AA
IP117AHVG	1	1.25 to 60	1.5	60	0.3	1.0	7703407TA	TO-257AA
IP117HVG	4	1.25 to 60	1.5	60	0.3	1.0	7703402TA	TO-257AA
IP117AHVSMD	1	1.25 to 60	1.5	60	0.3	1.0	7703407NA	TO-276AB
IP117HVSMD	4	1.25 to 60	1.5	60	0.3	1.0	7703402NA	TO-276AB
IP117AHVR	1	1.25 to 60	1.5	60	0.3	1.0	7703407YA	TO-213AA
IP117HVR	4	1.25 to 60	1.5	60	0.3	1.0	7703402YA	TO-213AA
IP117AHVK	1	1.25 to 60	1.5	60	0.3	1.0	7703407ZA	TO-204AA
IP117HVK	4	1.25 to 60	1.5	60	0.3	1.0	7703402ZA	TO-204AA
IP150AK	1	1.25 to 35	3.0	35	0.3	1.0	5962-8767502XA	TO-204AA
IP150K	4	1.25 to 35	3.0	35	0.3	1.0	5962-8767501XA	TO-204AA
IP150AG	1	1.25 to 35	3.0	35	0.3	1.0	5962-8767502TA	TO-257AA
IP150G	4	1.25 to 35	3.0	35	0.3	1.0	5962-8767501TA	TO-257AA
IP150AIG	1	1.25 to 35	3.0	35	0.3	1.0	5962-8767502UA	TO-257AA
IP150IG	4	1.25 to 35	3.0	35	0.3	1.0	5962-8767501UA	TO-257AA
IP150ASMD05	1	1.25 to 35	3.0	35	0.3	1.0	5962-8767502ZA	TO-276AA
IP150SMD05	4	1.25 to 35	3.0	35	0.3	1.0	5962-8767501ZA	TO-276AA
IP150ASMD	1	1.25 to 35	3.0	35	0.3	1.0	N/A	TO-276AB

ADJ- voltage linear regulators

Semelab Part No.	Voltage Tol (%)	Vout	Iout	Vin	Line Reg % max	Load Reg % min	DSCC Drawing	Package
IP150SMD	4	1.25 to 35	3.0	35	0.3	1.0	N/A	TO-276AB
IP150AZ	1	1.25 to 35	3.0	35	0.3	1.0	N/A	LCC-20
IP150Z	4	1.25 to 35	3.0	35	0.3	1.0	N/A	LCC-20
IP137MAZ	1	-1.25 to -47	0.5	40	0.3	1.0	77034062A	LCC-20
IP137MZ	4	-1.25 to -47	0.5	40	0.3	1.0	77034032A	LCC-20
IP137MASMD05	1	-1.25 to -47	0.5	40	0.3	1.0	N/A	TO-276AA
IP137MSMD05	4	-1.25 to -47	0.5	40	0.3	1.0	N/A	TO-276AA
IP137MAY	1	-1.25 to -47	0.5	40	0.3	1.0	N/A	LCC-28
IP137MY	4	-1.25 to -47	0.5	40	0.3	1.0	N/A	LCC-28
IP137MAE	1	-1.25 to -47	0.5	40	0.3	1.0	N/A	LCC4
IP137ME	4	-1.25 to -47	0.5	40	0.3	1.0	N/A	LCC4
IP137MAH	1	-1.25 to -47	0.5	40	0.3	1.0	7703406XA	TO-205AD
IP137MH	4	-1.25 to -47	0.5	40	0.3	1.0	7703403XA	TO-205AD
IP137MAHVZ	1	-1.25 to -47	0.5	50	0.3	1.0	77034082A	LCC-20
IP137MHVZ	4	-1.25 to -47	0.5	50	0.3	1.0	77034042A	LCC-20
IP137MAHVSMD05	1	-1.25 to -47	0.5	50	0.3	1.0	N/A	TO-276AA
IP137MHVSMD05	4	-1.25 to -47	0.5	50	0.3	1.0	N/A	TO-276AA
IP137MAHVY	1	-1.25 to -47	0.5	50	0.3	1.0	N/A	LCC-28
IP137MHVY	4	-1.25 to -47	0.5	50	0.3	1.0	N/A	LCC-28
IP137MAHVE	1	-1.25 to -47	0.5	50	0.3	1.0	N/A	LCC4
IP137MHVE	4	-1.25 to -47	0.5	50	0.3	1.0	N/A	LCC4
IP137MAHVH	1	-1.25 to -47	0.5	50	0.3	1.0	7703408XA	TO-205AD
IP137MHVH	4	-1.25 to -47	0.5	50	0.3	1.0	7703404XA	TO-205AD
IP137AIG	1	-1.25 to -47	1.5	40	0.3	1.0	7703406UA	TO-257AA
IP137IG	4	-1.25 to -47	1.5	40	0.3	1.0	7703403UA	TO-257AA
IP137AG	1	-1.25 to -47	1.5	40	0.3	1.0	7703406TA	TO-257AA
IP137G	4	-1.25 to -47	1.5	40	0.3	1.0	7703403TA	TO-257AA
IP137ASMD	1	-1.25 to -47	1.5	40	0.3	1.0	7703406NA	TO-276AB
IP137SMD	4	-1.25 to -47	1.5	40	0.3	1.0	7703403NA	TO-276AB
IP137AR	1	-1.25 to -47	1.5	40	0.3	1.0	7703406YA	TO-213AA
IP137R	4	-1.25 to -47	1.5	40	0.3	1.0	7703403YA	TO-213AA
IP137HVIG	4	-1.25 to -47	1.5	50	0.3	1.0	7703404UA	TO-257AA
IP137AHVG	1	-1.25 to -47	1.5	50	0.3	1.0	7703408TA	TO-257AA
IP137HVG	4	-1.25 to -47	1.5	50	0.3	1.0	7703404TA	TO-257AA
IP137AHVSMD	1	-1.25 to -47	1.5	50	0.3	1.0	7703408NA	TO-276AB
IP137HVSMD	4	-1.25 to -47	1.5	50	0.3	1.0	7703404NA	TO-276AB
IP137AHVR	1	-1.25 to -47	1.5	50	0.3	1.0	7703408YA	TO-213AA
IP137HVR	4	-1.25 to -47	1.5	50	0.3	1.0	7703404YA	TO-213AA
IP137AHVK	1	-1.25 to -47	1.5	50	0.3	1.0	7703408ZA	TO-204AA
IP137HVK	4	-1.25 to -47	1.5	50	0.3	1.0	7703404ZA	TO-204AA

Low dropout ADJ-voltage regulators

Semelab Part No.	Input Voltage Min (Vin)	Vdiff	Output Current (Iout)	Vdo	Load Reg (abs%)	Package
LM1086Z	3.0	35	1.5	1.5	0.4	LCC-20
LM1086Y	3.0	35	1.5	1.5	0.4	LCC-28
LM1086IG	3.0	35	1.5	1.5	0.4	TO-257AA
LM1086G	3.0	35	1.5	1.5	0.4	TO-257AA
LM1086SMD	3.0	35	1.5	1.5	0.4	TO-276AB
LM1086SMD05	3.0	35	1.5	1.5	0.4	TO-276AA
LM1086MH	3.0	35	1.5	1.5	0.4	TO-205AD
LM1086MK	3.0	35	1.5	1.5	0.4	TO-204AA
LM1085Z	3.0	35	3.0	1.5	0.4	LCC-20
LM1085Y	3.0	35	3.0	1.5	0.4	LCC-28
LM1085R	3.0	35	3.0	1.5	0.4	TO-213AA
LM1085MK	3.0	35	3.0	1.5	0.4	TO-204AA
LM1085IG	3.0	35	3.0	1.5	0.4	TO-257AA
LM1085G	3.0	35	3.0	1.5	0.4	TO-257AA
LM1085SMD05	3.0	35	3.0	1.5	0.4	TO-276AA
LM1085SMD	3.0	35	3.0	1.5	0.4	TO-276AB
LM1084IG	3.0	35	5.0	1.5	0.4	TO-257AA
LM1084G	3.0	35	5.0	1.5	0.4	TO-257AA
LM1084SMD05	3.0	35	5.0	1.5	0.4	TO-276AA
LM1084SMD	3.0	35	5.0	1.5	0.4	TO-276AB
LM1084HN	3.0	35	5.0	1.5	0.4	TO-258AA
LM1084R	3.0	35	5.0	1.5	0.4	TO-213AA
LM1084MK	3.0	35	5.0	1.5	0.4	TO-258AA
LM1083HN	3.0	35	7.5	1.5	0.4	TO-258AA
LM1083SMD	3.0	35	7.5	1.5	0.4	TO-276AB
LM1083R	3.0	35	7.5	1.5	0.4	TO-213AA
LM1083MK	3.0	35	7.5	1.5	0.4	TO-204AA

Dual fixed voltage regulators

Semelab Part No.	Vout	Iout	Input Voltage Max Die 1	Input Voltage Max Die 2	Line Reg Die 1 (abs%)	Line Reg Die 2 (abs%)	Load Reg Die 1 (abs%)	Load Reg Die 2 (abs%)	DSCC Drawing	Package
IP905805DD	-5/+5	1.5	-25	+25	0.5	0.5	1.5	1.0	N/A	MO-078AA
IP905905DD	-5/-5	1.5	-25	-25	0.5	0.5	1.5	1.5	N/A	MO-078AA
IP905812DD	-5/+12	1.5	-25	+30	0.5	0.5	1.5	1.0	N/A	MO-078AA
IP905912DD	-5/-12	1.5	-25	-30	0.5	0.5	1.5	1.5	N/A	MO-078AA
IP905815DD	-5/+15	1.5	-25	+30	0.5	0.5	1.5	1.0	N/A	MO-078AA
IP905915DD	-5/-15	1.5	-25	-30	0.5	0.5	1.5	1.5	N/A	MO-078AA
IP912805DD	-12/+5	1.5	-30	+25	0.5	0.5	1.5	1.0	N/A	MO-078AA
IP912905DD	-12/-5	1.5	-30	-25	0.5	0.5	1.5	1.5	N/A	MO-078AA
IP912812DD	-12/+12	1.5	-30	+30	0.5	0.5	1.5	1.0	N/A	MO-078AA
IP912912DD	-12/-12	1.5	-30	-30	0.5	0.5	1.5	1.5	N/A	MO-078AA
IP912815DD	-12/+15	1.5	-30	+30	0.5	0.5	1.5	1.0	N/A	MO-078AA
IP912915DD	-12/-15	1.5	-30	-30	0.5	0.5	1.5	1.5	N/A	MO-078AA
IP915805DD	-15/+5	1.5	-30	+25	0.5	0.5	1.5	1.0	N/A	MO-078AA
IP915905DD	-15/-5	1.5	-30	-25	0.5	0.5	1.5	1.5	N/A	MO-078AA
IP915812DD	-15/+12	1.5	-30	+30	0.5	0.5	1.5	1.0	N/A	MO-078AA
IP915912DD	-15/-12	1.5	-30	-30	0.5	0.5	1.5	1.5	N/A	MO-078AA
IP915815DD	-15/+15	1.5	-30	+30	0.5	0.5	1.5	1.0	N/A	MO-078AA
IP915915DD	-15/-15	1.5	-30	-30	0.5	0.5	1.5	1.5	N/A	MO-078AA
IP805805DD	+5/+5	1.5	+25	+25	0.5	0.5	1.0	1.0	N/A	MO-078AA
IP805905DD	+5/-5	1.5	+25	-25	0.5	0.5	1.0	1.5	N/A	MO-078AA
IP805812DD	+5/+12	1.5	+25	+30	0.5	0.5	1.0	1.0	N/A	MO-078AA
IP805912DD	+5/-12	1.5	+25	-30	0.5	0.5	1.0	1.5	N/A	MO-078AA
IP805815DD	+5/+15	1.5	+25	+30	0.5	0.5	1.0	1.0	N/A	MO-078AA
IP805915DD	+5/-15	1.5	+25	-30	0.5	0.5	1.0	1.5	N/A	MO-078AA
IP812805DD	+12/+5	1.5	+30	+25	0.5	0.5	1.0	1.0	N/A	MO-078AA
IP812905DD	+12/-5	1.5	+30	-25	0.5	0.5	1.0	1.5	N/A	MO-078AA
IP812812DD	+12/+12	1.5	+30	+30	0.5	0.5	1.0	1.0	N/A	MO-078AA
IP812912DD	+12/-12	1.5	+30	-30	0.5	0.5	1.0	1.5	N/A	MO-078AA
IP812815DD	+12/+15	1.5	+30	+30	0.5	0.5	1.0	1.0	N/A	MO-078AA
IP812915DD	+12/-15	1.5	+30	-30	0.5	0.5	1.0	1.5	N/A	MO-078AA
IP815805DD	+15/+5	1.5	+30	+25	0.5	0.5	1.0	1.0	N/A	MO-078AA
IP815905DD	+15/-5	1.5	+30	-25	0.5	0.5	1.0	1.5	N/A	MO-078AA
IP815812DD	+15/+12	1.5	+30	+30	0.5	0.5	1.0	1.0	N/A	MO-078AA
IP815912DD	+15/-12	1.5	+30	-30	0.5	0.5	1.0	1.5	N/A	MO-078AA
IP815815DD	+15/+15	1.5	+30	+30	0.5	0.5	1.0	1.0	N/A	MO-078AA
IP815915DD	+15/-15	1.5	+30	-30	0.5	0.5	1.0	1.5	N/A	MO-078AA

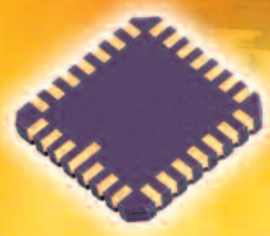
Package options



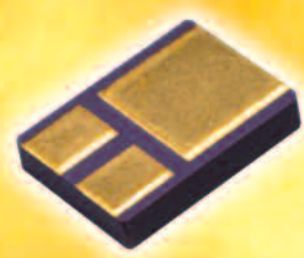
LCC-4



LCC-18



LCC-28



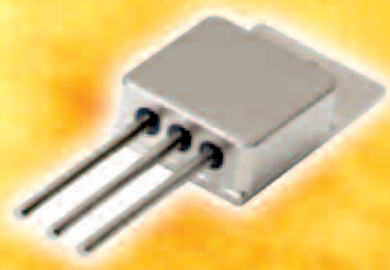
TO-276AB (SMD1)



TO-276AA (SMD05)



TO-257AA



TO-258AA



MO-078AA (5PIN TO-258)



TO-213AA (TO-66)



TO-204AA (TO-3)



TO-205AD (TO-39)





Experience and Innovation in Semiconductor Solutions

Specialists In

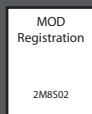
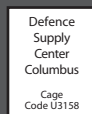
- Ceramic surface mount products
- Hermetic metal packaged devices
- Hermetic power modules
- Standard and custom products
- Screening and qualifications
- Continued supply of earlier device types and packages

Semelab holds approvals for many aerospace semiconductor devices, and can manufacture in accordance with CECC, JANTX, ESAlevel 5000 and other major process flows.

MCAs are available with extensive screening options to satisfy almost any hi-rel application.

Please let us know your requirements - we can almost certainly meet them.

Your Semelab Distributor:



Semelab Plc
Coventry Road,
Lutterworth,
Leicestershire. LE17 4JB
UK

Tel: +44 (0) 1455 556565
Fax: +44 (0) 1455 552612
Email: sales@semelab.co.uk

Web: www.semelab.co.uk
www.semelab.com